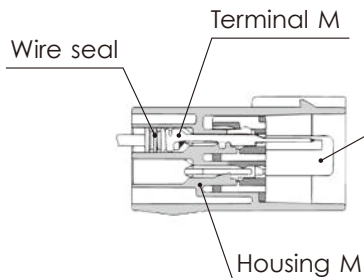
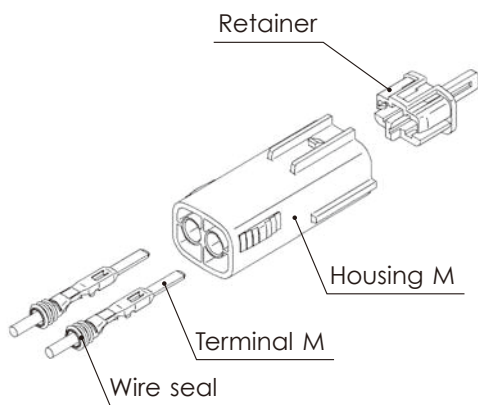


# DL SEALED SERIES for STANDARD

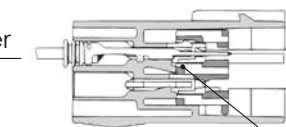
2.3mm (090)

Structure / 構造



Detecting structure for incomplete terminal insertion

ターミナル半挿入検知構造

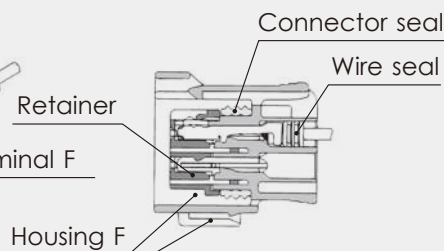
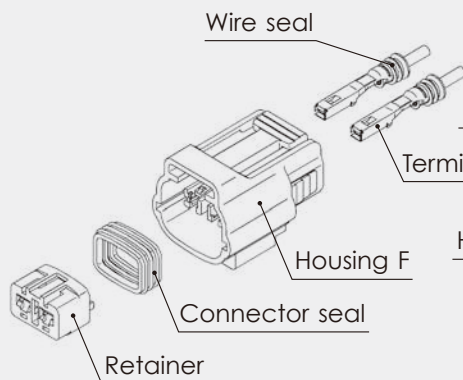


Detection for incomplete terminal insertion  
ターミナル半挿入検知状態

L-02

Connector M

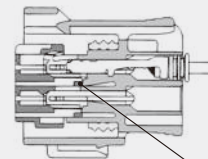
Connector F



Body fastening clamp and  
Body fastening bracket mount  
固定用別体クランプ及び  
ボデー固定用ブラケット取付部

Detecting structure for incomplete terminal insertion

ターミナル半挿入検知構造



Detection for incomplete terminal insertion  
ターミナル半挿入検知状態

2.3mm (090)

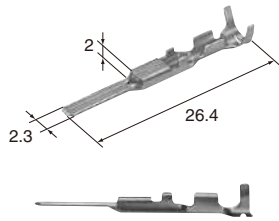
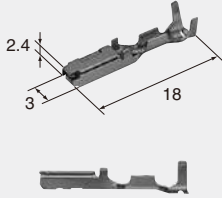
Terminal (UNIT : mm)

※ For terminal selection, please contact our sales staff.

※ターミナル選定にあたっては、必ず弊社営業担当にお問い合わせください。

**(S)**

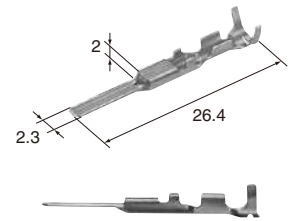
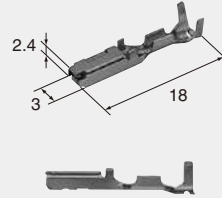
Cable size (mm <sup>2</sup> ) 適用電線サイズ	0.3~0.5
Material 材質	Brass 黄銅
Surface treatment 表面処理	Tin-plated Snメッキ

**M (8230-4472)****F (8100-1427)**

Cable size (mm <sup>2</sup> ) 適用電線サイズ	0.3~0.5
Material 材質	Heat-resistant copper alloy
Surface treatment 表面処理	Tin-plated Snメッキ

**(S)****Au**

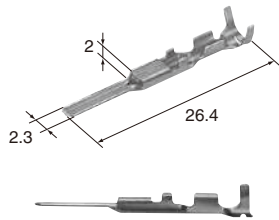
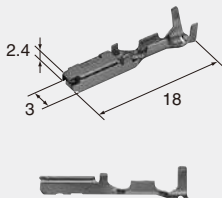
Cable size (mm <sup>2</sup> ) 適用電線サイズ	0.3~0.5
Material 材質	Brass 黄銅
Surface treatment 表面処理	Gold-plated Auメッキ

**M (1500-0159)****F (8100-1458)**

Cable size (mm <sup>2</sup> ) 適用電線サイズ	0.3~0.5
Material 材質	Heat-resistant copper alloy
Surface treatment 表面処理	Gold-plated Auメッキ

**(M)**

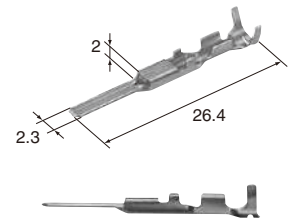
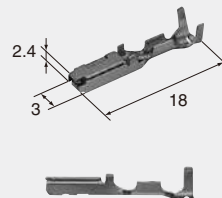
Cable size (mm <sup>2</sup> ) 適用電線サイズ	0.75~0.85
Material 材質	Brass 黄銅
Surface treatment 表面処理	Tin-plated Snメッキ

**M (8230-4562)****F (8100-1429)**

Cable size (mm <sup>2</sup> ) 適用電線サイズ	0.75~0.85
Material 材質	Heat-resistant copper alloy
Surface treatment 表面処理	Tin-plated Snメッキ

**(M)****Au**

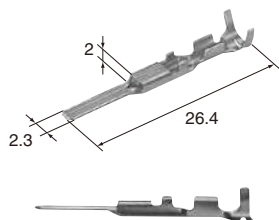
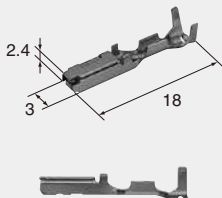
Cable size (mm <sup>2</sup> ) 適用電線サイズ	0.75~0.85
Material 材質	Brass 黄銅
Surface treatment 表面処理	Gold-plated Auメッキ

**M (1500-0169)****F (8100-1460)**

Cable size (mm <sup>2</sup> ) 適用電線サイズ	0.75~0.85
Material 材質	Heat-resistant copper alloy
Surface treatment 表面処理	Gold-plated Auメッキ

**(L)**

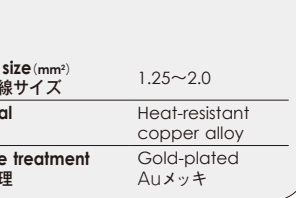
Cable size (mm <sup>2</sup> ) 適用電線サイズ	1.25~2.0
Material 材質	Brass 黄銅
Surface treatment 表面処理	Tin-plated Snメッキ

**M (8230-4552)****F (8100-1428)**

Cable size (mm <sup>2</sup> ) 適用電線サイズ	1.25~2.0
Material 材質	Heat-resistant copper alloy
Surface treatment 表面処理	Tin-plated Snメッキ

**(L)****Au****F (8100-1459)**

Cable size (mm <sup>2</sup> ) 適用電線サイズ	1.25~2.0
Material 材質	Heat-resistant copper alloy
Surface treatment 表面処理	Gold-plated Auメッキ



Cable size (mm <sup>2</sup> ) 適用電線サイズ	1.25~2.0
Material 材質	Heat-resistant copper alloy
Surface treatment 表面処理	Gold-plated Auメッキ

## 2.3mm (090)

### Wire seals (UNIT : mm)

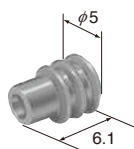
- The wire seals are common to M and F.
- ワイヤシールは M、F 共用です。

(S)

(7165-0118)

Cable overall diameter(mm) Over than 1.5 mm below 2.0 mm  
電線仕上り外径 1.5 mmを越え2.0 mm以下

Material 材質	NBR
Color 色相	Blue 青

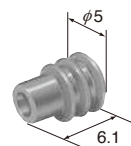


(SS)

(7165-0210)

Cable overall diameter(mm) Over than 1.1 mm below 1.5 mm  
電線仕上り外径 1.1 mmを越え1.5 mm以下

Material 材質	NBR
Color 色相	Red 赤

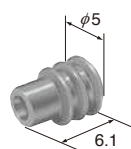


(M)

(7165-0119)

Cable overall diameter(mm) Over than 2.0 mm below 2.9 mm  
電線仕上り外径 2.0 mmを越え2.9 mm以下

Material 材質	NBR
Color 色相	Brown 茶



## 2.3mm (090)

### Dummy plugs (UNIT : mm)

Ref; 2.3mm Dummy plug detail  
2.3mmダミー栓掲載頁

(7161-9787) B-15

(7165-0193) J-07

- Dummy plugs are common to M and F.
- Dummy plugs are used to blind unused terminal holes.
- ダミー栓は M、F 共用です。
- 不必要なターミナル穴を塞ぐために、ダミー栓を使用します。

## 2.3mm (090)

### Housing (UNIT : mm)

Ref: Terminal part No. L-02  
ターミナル参照頁

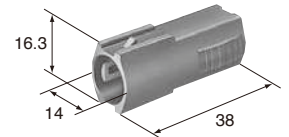
Ref: wire seal No. L-04  
ワイヤシール参照頁

Ref: Dummy plug No. B-11  
ダミー栓参照頁

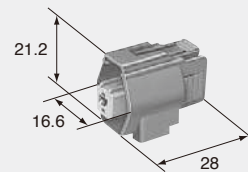
Material PBT or Low water absorption Nylon  
材質

### 1way

Color Dark Gray  
色相 濃灰



### M (6195-0240)

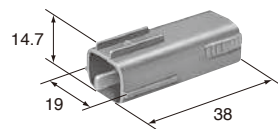


Color Dark Gray  
色相 濃灰  
Note L-07  
備考 Bracket Clamp : TYPE2

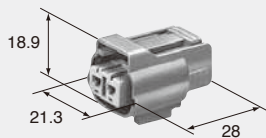
### F (6195-0066)

### 2way

Color Dark Gray  
色相 濃灰



### M (6195-0006)

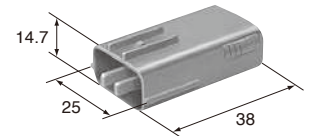


Color Dark Gray  
色相 濃灰  
Note L-07  
備考 Bracket Clamp : TYPE2

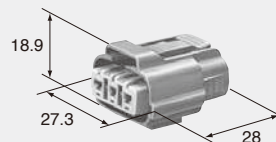
### F (6195-0003)

### 3way

Color Dark Gray  
色相 濃灰



### M (6195-0012)

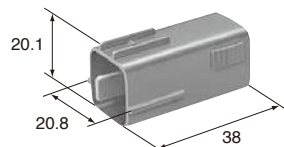


Color Dark Gray  
色相 濃灰  
Note L-07  
備考 Bracket Clamp : TYPE2

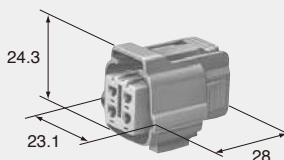
### F (6195-0009)

### 4way

Color Dark Gray  
色相 濃灰



### M (6195-0018)

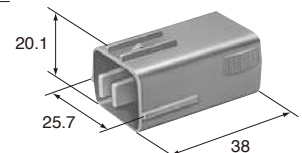


Color Dark Gray  
色相 濃灰  
Note L-07  
備考 Bracket Clamp : TYPE2

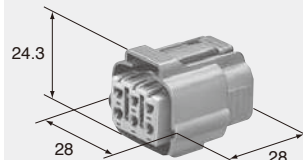
### F (6195-0015)

### 6way

Color Dark Gray  
色相 濃灰



### M (6195-0024)

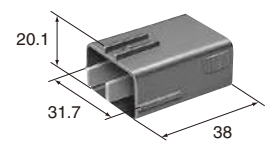


Color Dark Gray  
色相 濃灰  
Note L-07  
備考 Bracket Clamp : TYPE2

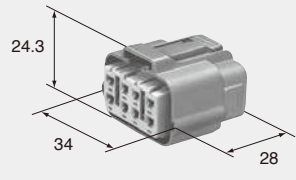
### F (6195-0021)

**8way**

Color 色相 Dark Gray 濃灰



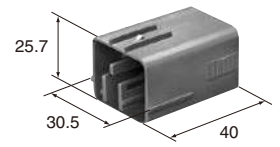
**M (6195-0054)** **F (6195-0051)**



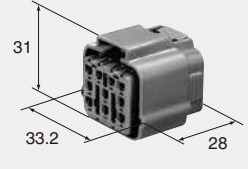
Color 色相 Dark Gray 濃灰  
 Note 備考 L-07  
 Bracket Clamp : TYPE2

**10way**

Color 色相 Light Gray 薄灰



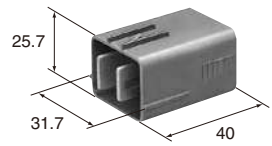
**M (6195-0167)** **F (6195-0164)**



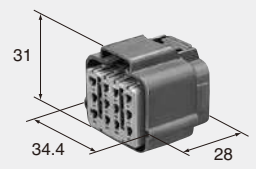
Color 色相 Light Gray 薄灰  
 Note 備考 L-07  
 Bracket Clamp : TYPE2

**12way**

Color 色相 Dark Gray 濃灰



**M (6195-0152)** **F (6195-0149)**

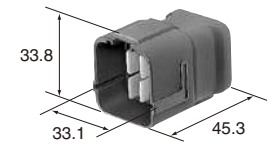


Color 色相 Dark Gray 濃灰  
 Note 備考 L-07  
 Bracket Clamp : TYPE2

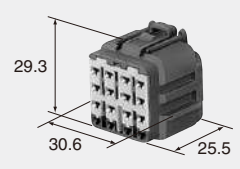
**16way**

Color 色相 Dark Gray 濃灰

Note 備考 L-07  
 Bracket Clamp : TYPE1



**M (6188-0495)** **F (6189-0715)**



Color 色相 Dark Gray 濃灰