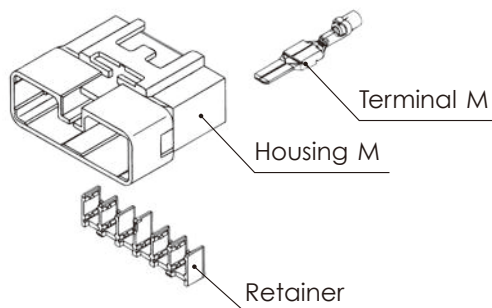


# TS SERIES for STANDARD

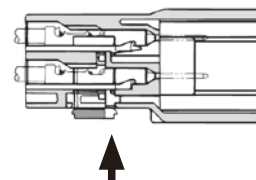
4.8mm (187)

A-14

Structure / 構造

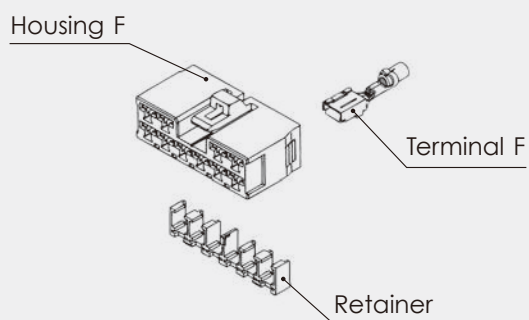


Connector M

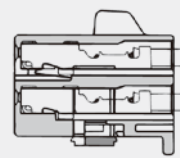


Retainer sliding direction

リテーナを押込むことにより、端子の半挿入状態を検知できます。



Connector F



Retainer sliding direction

リテーナを押込むことにより、端子の半挿入状態を検知できます。

4.8mm (187)

Terminal (UNIT : mm)

**(S)**Cable size (mm<sup>2</sup>) 0.3~0.5

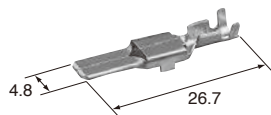
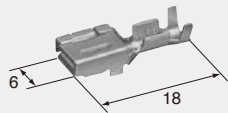
適用電線サイズ

Material Brass

材質 黄銅

Surface treatment Tin-plated

表面処理 Snメッキ

**M (8230-4522)****F (8240-4912)**Cable size (mm<sup>2</sup>) 0.3~0.5

適用電線サイズ

Material Brass

材質 黄銅

Surface treatment Tin-plated

表面処理 Snメッキ

**(M)**Cable size (mm<sup>2</sup>) 0.5~1.25

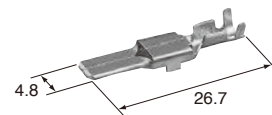
適用電線サイズ

Material Brass

材質 黄銅

Surface treatment Tin-plated

表面処理 Snメッキ

**M (8230-4532)****F (8240-4922)**Cable size (mm<sup>2</sup>) 0.5~1.25

適用電線サイズ

Material Brass

材質 黄銅

Surface treatment Tin-plated

表面処理 Snメッキ

**(L)**Cable size (mm<sup>2</sup>) 2.0~3.0

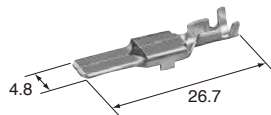
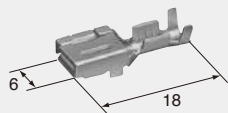
適用電線サイズ

Material Brass

材質 黄銅

Surface treatment Tin-plated

表面処理 Snメッキ

**M (8230-4542)****F (8240-4932)**Cable size (mm<sup>2</sup>) 2.0~3.0

適用電線サイズ

Material Brass

材質 黄銅

Surface treatment Tin-plated

表面処理 Snメッキ

**(L)****F (8100-1555)**Cable size (mm<sup>2</sup>) 2.0~3.0

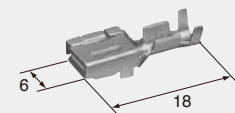
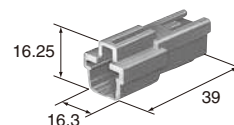
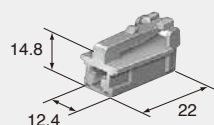
適用電線サイズ

Material Heat-resistant

材質 copper alloy

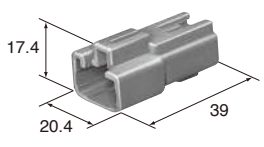
Surface treatment Tin-plated

表面処理 Snメッキ

**4.8mm (187)****Housing** (UNIT : mm)Ref: Terminal part No. A-14  
ターミナル参照頁Material PBT  
材質**1way**Color Natural  
色相 自然色**M (6098-0822)****F (6098-0824)**Color Natural  
色相 自然色

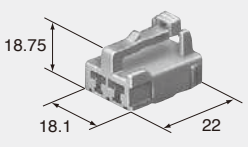
**2way**

Color 色相 Natural 自然色



**M (6098-0323)**

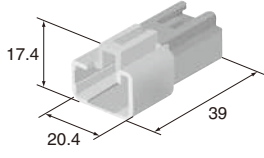
**F (6098-0325)**



Color 色相 Natural 自然色

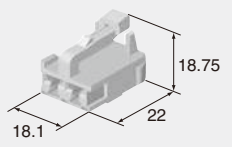
**2way**

Color 色相 Natural 自然色



**M (6098-0469)**

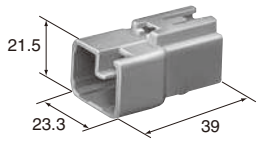
**F (6098-0471)**



Color 色相 Natural 自然色

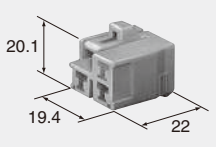
**3way**

Color 色相 Natural 自然色



**M (6098-0149)**

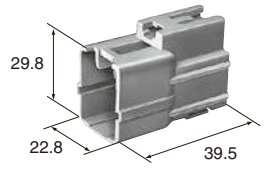
**F (6098-0151)**



Color 色相 Natural 自然色

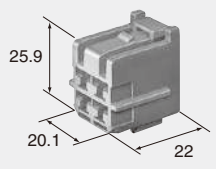
**4way**

Color 色相 Natural 自然色



**M (6098-1851)**

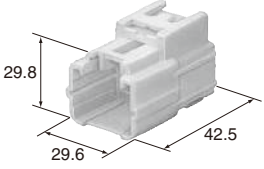
**F (6098-1489)**



Color 色相 Natural 自然色

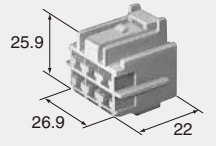
**6way**

Color 色相 Natural 自然色



**M (6098-2211)**

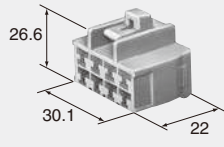
**F (6098-1716)**



Color 色相 Natural 自然色

**8way**

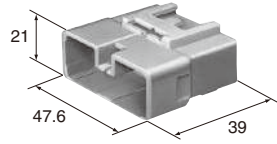
**F (6098-0518)**



Color 色相 Natural 自然色

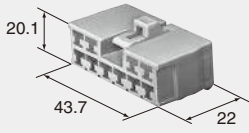
**10way**

Color Natural  
色 相 自然色



**M (6098-0154)**

**F (6098-0156)**



Color Natural  
色 相 自然色